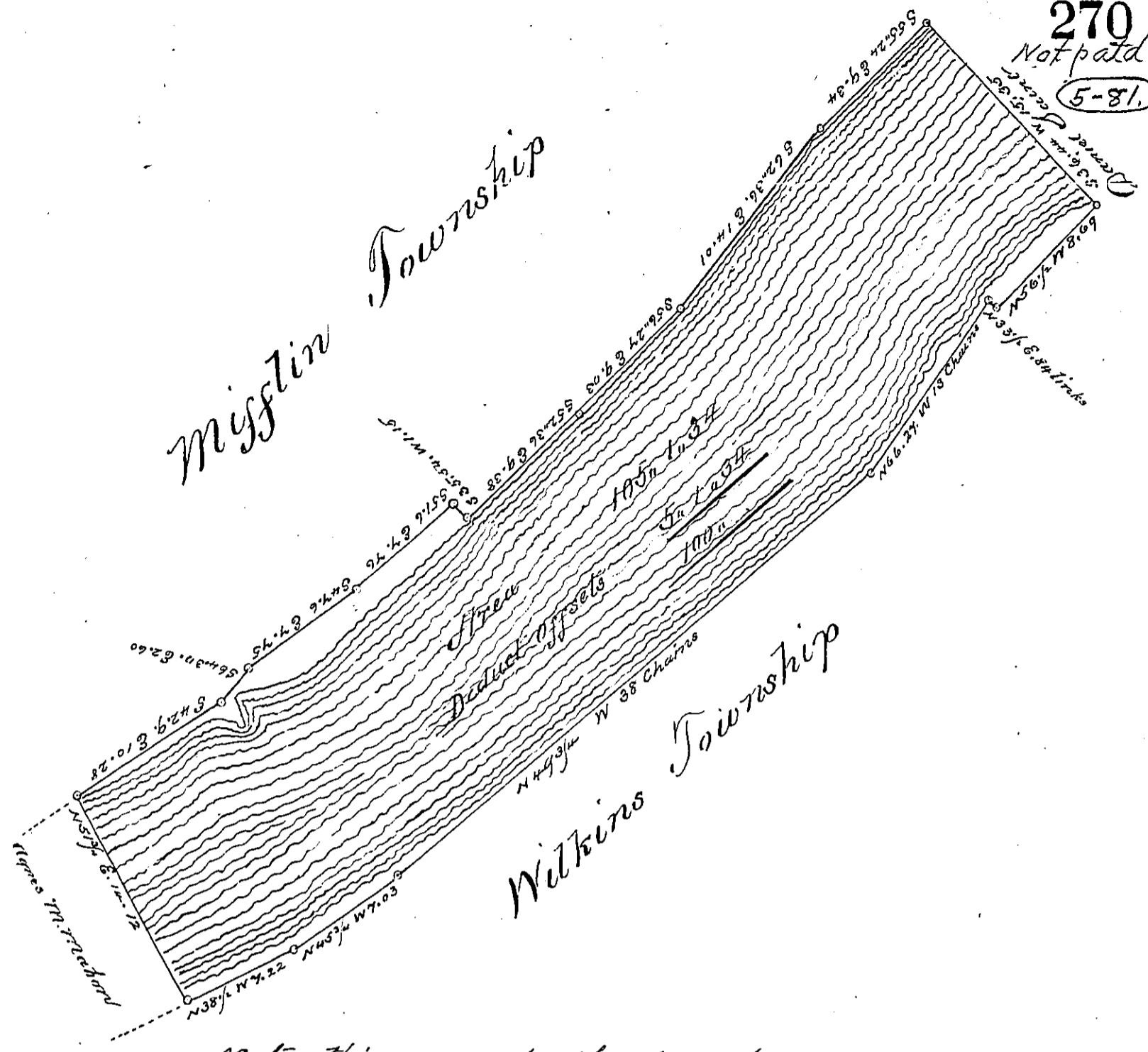


270
Not paid
5-81



Note, this survey has heretofore been made for return-
1st on Warrant to J.D. Mahon, in 1848, and afterwards for Samuel Beidler
in 1860

Draught of a survey of One hundred Acres of the
Bed of the Monongahela River, Surveyed on a Warrant granted to
James O Mahon, dated the 3rd day of October, 1865. Situate be-
tween the Townships of Wilkins & Misslin, in Allegheny County,
Pennsylvania

Executed ^{as of} the 6th day of October A.D. 1865

E. A. Hastings C.S.

To James P. Barr Esq
Surveyor General
Harrisburg Pennsylvania

IN TESTIMONY that the above is a copy of the original remaining on file in the
Department of Internal Affairs of Pennsylvania, made con-
formably to an Act of Assembly approved the 16th day of
February, 1833, I have hereunto set my Hand and caused
the Seal of said Department to be affixed at Harrisburg, this

Ninth day of April 1891

Geo. J. Stewart
Secretary of Internal Affairs